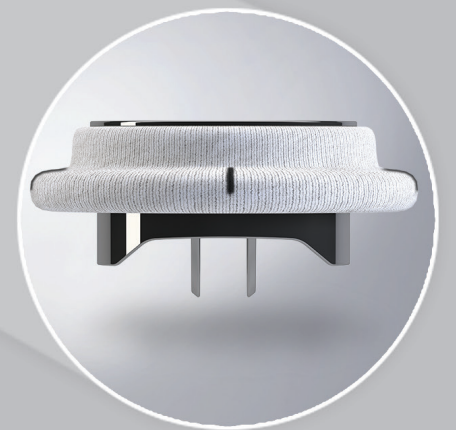
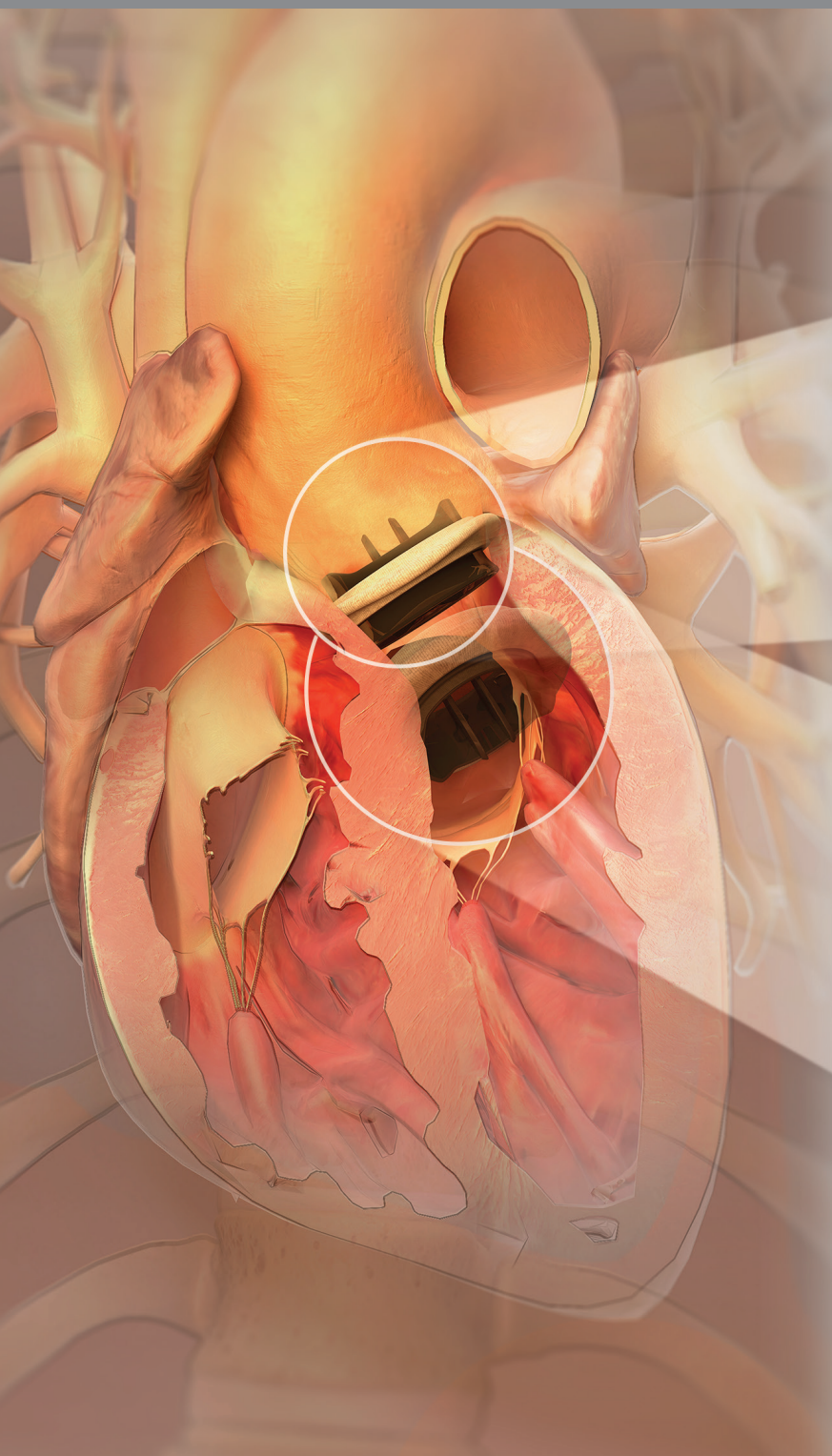
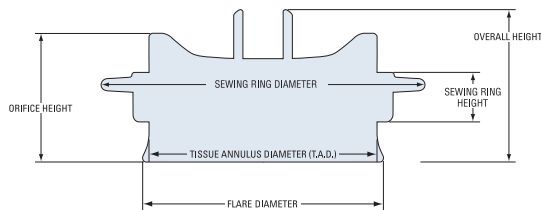


Product Catalogue



On-X Valve Specifications

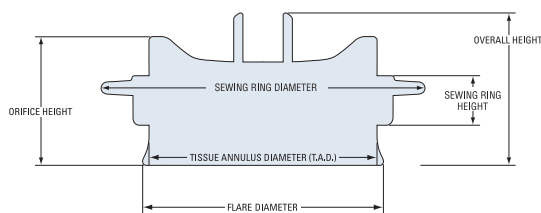
On-X Prosthetic Aortic Valve with Anatomic Sewing Ring¹



19 mm to 27/29 mm

| Valve Size | Product Code | Tissue Annulus Diameter (mm) | Internal Diameter (mm) | Flare Diameter (mm) | Sewing Ring Diameter ² (mm) | Overall Height (mm) | Orifice Height (mm) | Internal Orifice Area (cm ²) |
|------------|--------------|------------------------------|------------------------|---------------------|--|---------------------|---------------------|--|
| 19 | ONXANE-19 | 19 | 17.4 | 20.1 | 27 | 13.3 | 10.8 | 2.28 |
| 21 | ONXANE-21 | 21 | 19.4 | 22.2 | 30 | 14.7 | 11.9 | 2.84 |
| 23 | ONXANE-23 | 23 | 21.4 | 24.3 | 33 | 16.1 | 13.1 | 3.44 |
| 25 | ONXANE-25 | 25 | 23.4 | 26.4 | 34 | 17.8 | 14.2 | 4.11 |
| 27/29 | ONXANE-27/29 | 27-29 | 23.4 | 26.4 | 36 | 17.8 | 14.2 | 4.11 |

On-X Prosthetic Aortic Valve with Conform-X Sewing Ring¹



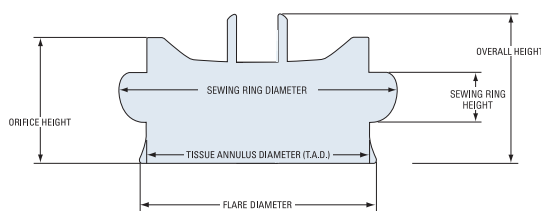
19 mm to 25 mm



27/29 mm

| Valve Size | Product Code | Tissue Annulus Diameter (mm) | Internal Diameter (mm) | Flare Diameter (mm) | Sewing Ring Diameter ² (mm) | Overall Height (mm) | Orifice Height (mm) | Internal Orifice Area (cm ²) |
|------------|--------------|------------------------------|------------------------|---------------------|--|---------------------|---------------------|--|
| 19 | ONXACE-19 | 19 | 17.4 | 20.1 | 27 | 13.3 | 10.8 | 2.28 |
| 21 | ONXACE-21 | 21 | 19.4 | 22.2 | 30 | 14.7 | 11.9 | 2.84 |
| 23 | ONXACE-23 | 23 | 21.4 | 24.3 | 33 | 16.1 | 13.1 | 3.44 |
| 25 | ONXACE-25 | 25 | 23.4 | 26.4 | 34 | 17.8 | 14.2 | 4.11 |
| 27/29 | ONXACE-27/29 | 27-29 | 23.4 | 26.4 | 36 | 17.8 | 14.2 | 4.11 |

On-X Prosthetic Aortic Valve with Standard Sewing Ring¹



19 mm to 25 mm



27/29 mm

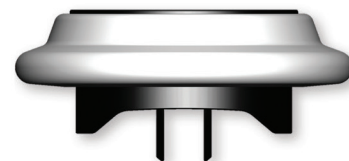
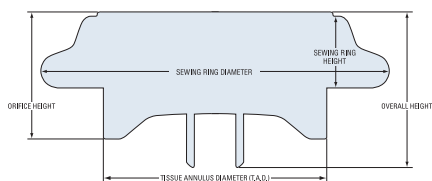
| Valve Size | Product Code | Tissue Annulus Diameter (mm) | Internal Diameter (mm) | Flare Diameter (mm) | Sewing Ring Diameter ² (mm) | Overall Height (mm) | Orifice Height (mm) | Internal Orifice Area (cm ²) |
|------------|--------------|------------------------------|------------------------|---------------------|--|---------------------|---------------------|--|
| 19 | ONXAE-19 | 19 | 17.4 | 20.1 | 23 | 13.3 | 10.8 | 2.28 |
| 21 | ONXAE-21 | 21 | 19.4 | 22.2 | 26 | 14.7 | 11.9 | 2.84 |
| 23 | ONXAE-23 | 23 | 21.4 | 24.3 | 29 | 16.1 | 13.1 | 3.44 |
| 25 | ONXAE-25 | 25 | 23.4 | 26.4 | 32 | 17.8 | 14.2 | 4.11 |
| 27/29 | ONXAE-27/29 | 27-29 | 23.4 | 26.4 | 34 | 17.8 | 14.2 | 4.11 |

On-X Ascending Aortic Prosthesis with the Vascutek® Gelweave® Valsalva™ Graft³



| Valve Size | Product Code | Valve Internal Diameter (mm) | Valve Orifice Area with Leaflets in Place (cm ²) | Sewing Ring Diameter ² (mm) | Graft Diameter (mm) | Graft Length (cm) |
|------------|--------------|------------------------------|--|--|---------------------|-------------------|
| 19 | ONXAAP-19 | 17.4 | 2.00 | 27 | 20 | 11 |
| 21 | ONXAAP-21 | 19.4 | 2.53 | 30 | 22 | 11 |
| 23 | ONXAAP-23 | 21.4 | 3.13 | 33 | 24 | 11 |
| 25 | ONXAAP-25 | 23.4 | 3.73 | 34 | 26 | 11 |
| 27/29 | ONXAAP-27/29 | 23.4 | 3.73 | 36 | 26 | 11 |

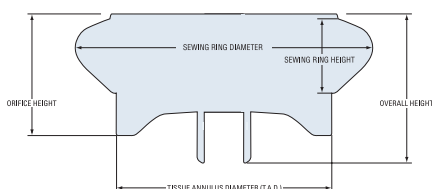
On-X Prosthetic Mitral Valve with Conform-X Sewing Ring¹



25/33 mm

| Valve Size | Product Code | Tissue Annulus Diameter (mm) | Internal Diameter (mm) | Sewing Ring Diameter ² (mm) | Overall Height (mm) | Orifice Height (mm) | Internal Orifice Area (cm ²) |
|------------|--------------|------------------------------|------------------------|--|---------------------|---------------------|--|
| 25/33 | ONXMC-25/33 | 25-33 | 23.4 | 39 | 17.8 | 14.2 | 4.11 |

On-X Prosthetic Mitral Valve with Standard Sewing Ring¹



23 mm and 25 mm



27/29 mm and 31/33 mm

| Valve Size | Product Code | Tissue Annulus Diameter (mm) | Internal Diameter (mm) | Sewing Ring Diameter ² (mm) | Overall Height (mm) | Orifice Height (mm) | Internal Orifice Area (cm ²) |
|------------|--------------|------------------------------|------------------------|--|---------------------|---------------------|--|
| 23 | ONXM-23 | 23 | 21.4 | 31 | 16.1 | 13.1 | 3.44 |
| 25 | ONXM-25 | 25 | 23.4 | 33 | 17.8 | 14.2 | 4.11 |
| 27/29 | ONXM-27/29 | 27-29 | 23.4 | 34 | 17.8 | 14.2 | 4.11 |
| 31/33 | ONXM-31/33 | 31-33 | 23.4 | 36 | 17.8 | 14.2 | 4.11 |

On-X Instrument Kit - Aortic and Mitral⁴

On-X Instrument Kit – Aortic and Mitral⁴

| Description | Product Code |
|----------------------|--------------|
| 13 instruments total | ONXI3-CK |

On-X Aortic Sizers

| Description | Product Code |
|----------------------|--------------|
| For valve size 19 | ONXI3-19S |
| For valve size 21 | ONXI3-21S |
| For valve size 23 | ONXI3-23S |
| For valve size 25 | ONXI3-25S |
| For valve size 27/29 | ONXI3-27-29S |

On-X Mitral Sizers

| Description | Product Code |
|---|--------------|
| For valve sizes 23, 25 and 25/33 | ONXI3-23-25S |
| For valve sizes 25/33, 27/29, and 31/33 | ONXI3-27-33S |

Note: The size of the On-X Mitral Valve with the Standard Sewing Ring corresponds to the size on the Mitral Sizer. The size of the On-X Mitral Valve with the Conform-X Sewing Ring depends on the size of the patient's anatomy and the Mitral Sizer for the 25, 27/29, or 31/33 may be applicable.

On-X Rotators

| Description | Product Code |
|---|--------------|
| For valve size 19 | ONXI2-19R |
| For valve size 21 | ONXI2-21R |
| For valve size 23 | ONXI2-23R |
| For valve sizes 25-33 | ONXI2-25R |
| For mitral valve sizes 25-33 ⁴ | ONXI3-25MR |

On-X Handle & Probe (universal)

| Description | Product Code |
|-------------------|--------------|
| Instrument Handle | ONXI2-H |
| Leaflet Probe | ONXI2-LP |

References:

- All On-X Valve sewing rings are made from polytetrafluoroethylene (PTFE)
- Sewing rings nominal dimensions
- The Vascutek Gelweave Valsava Graft, is a product of Vascutek, a Terumo Company <http://www.vascutek.com>
- The On-X instrument kit consists of one of every instrument listed above, except for the ONXI3-25MR, which is available separately upon request. Grey Sizers can be ordered through your local CryoLife representative.

On-X Life Technologies, Inc. is a wholly owned subsidiary of CryoLife, Inc. The On-X Prosthetic Heart Valves are manufactured by On-X Life Technologies, Inc. CryoLife, the snowflake design, Life Restoring Technologies, and On-X are registered trademarks owned by CryoLife, Inc. or its subsidiaries. All other registered trademarks are owned by their respective owners. © 2017 CryoLife, Inc. All rights reserved.

On-X Sterilizable Tray

| Product/Size | Product Code |
|----------------------------|--------------|
| Tray Only - No Instruments | ONXI3-CT |

On-X Aortic Sizers



On-X Mitral Sizers



Rotators, Instrument Handle, and Leaflet Probe



On-X Life Technologies, Inc.
1300 East Anderson Lane, Bldg. B
Austin, Texas 78752 USA
Phone: (512) 339-8000
Fax: (512) 339-3636
Email: onx@onxlti.com

CryoLife, Inc.
1655 Roberts Boulevard, NW,
Kennesaw, Georgia 30144 USA
Phone: 888-427-9654
Fax: 770-590-3753
Email: CUSTSV@cryolife.com

CryoLife Europa
Bramley House, The Guildway
Old Portsmouth Road
Guildford, Surrey GU3 1LR
United Kingdom
Tel: +44 (0) 1483 441030
Fax: +44 (0) 1483 452860
Email: europaorders@cryolife.com

MLENM1011.001 (06/2017)

 **CryoLife**
Life Restoring Technologies