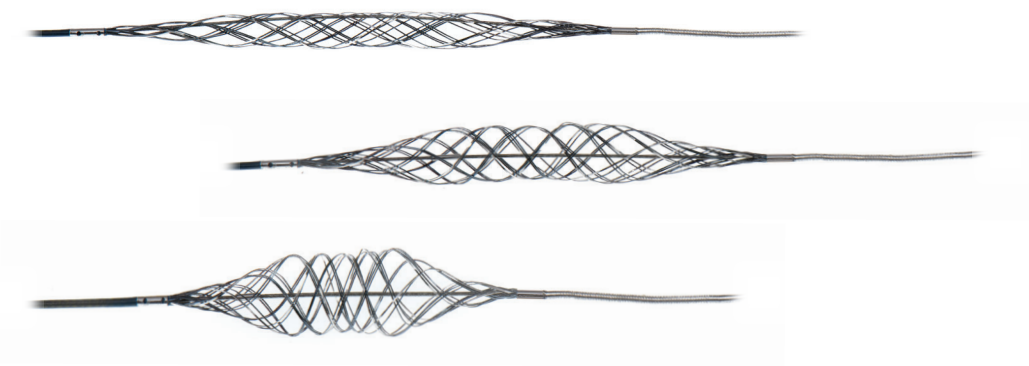


## Innovative tools for neurovascular interventions

The Stream device is the first product to feature CEREBRAL NET™ technology, an adjustable braided net configuration that allows device manipulation for complex neurovascular conditions.



**TAKE CONTROL**  
Real-time adjustments  
of net diameter, length, and radial force

**EXPAND YOUR OPTIONS**  
Physician-refined compliance  
provides the best fit for the vessel

**PERFLOW**  
MEDICAL

Empowering Physicians. Caring for Patients.

4 Hatzoran St., Netanya 4250604, Israel  
+972-3-6544011 [www.perflow.com](http://www.perflow.com)

**STREAM™**  
Dynamic Neuro-Thrombectomy Net

CE 0297

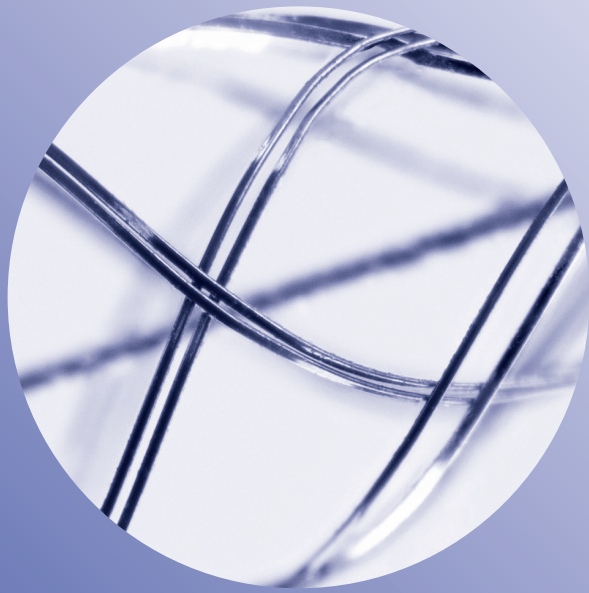
Please consult product labels and inserts for any indications, contraindications, hazards, warnings, precautions and instructions for use.  
© 2019 Perflow Medical All Rights Reserved.

Perflow products are not available for sale in the United States.

LB0012 Rev03

## Perfecting Perfusion

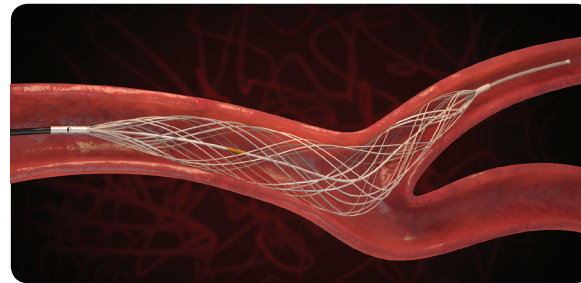
**PERFLOW**  
MEDICAL



The Stream™ Net empowers physicians with full device control and excellent visibility to make real-time adjustments during a thrombectomy procedure.

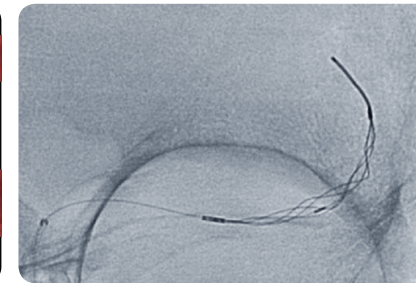
## Apply Your Expertise in Real-time

Clinical adjustments that make a difference



### Prevent Collapse in Tortuous Anatomy

Dynamic wall apposition with the ideal balance of flexibility and rigidity.



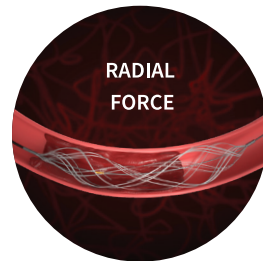
### See the Complete Picture

Braided net with excellent visibility under fluoroscopy.

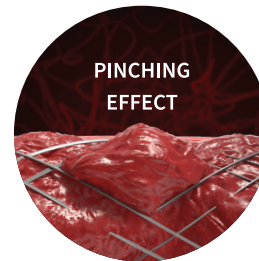
## Secure the Thrombus

### Efficient Clot Retention

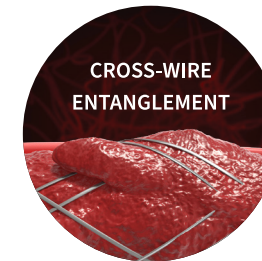
The braided net employs three methods to securely anchor and capture the clot during retrieval.



**Radial Force** generates friction between the clot and the device grip.



**Pinching Effect** created by diameter adjustments that change the angle between net wires.



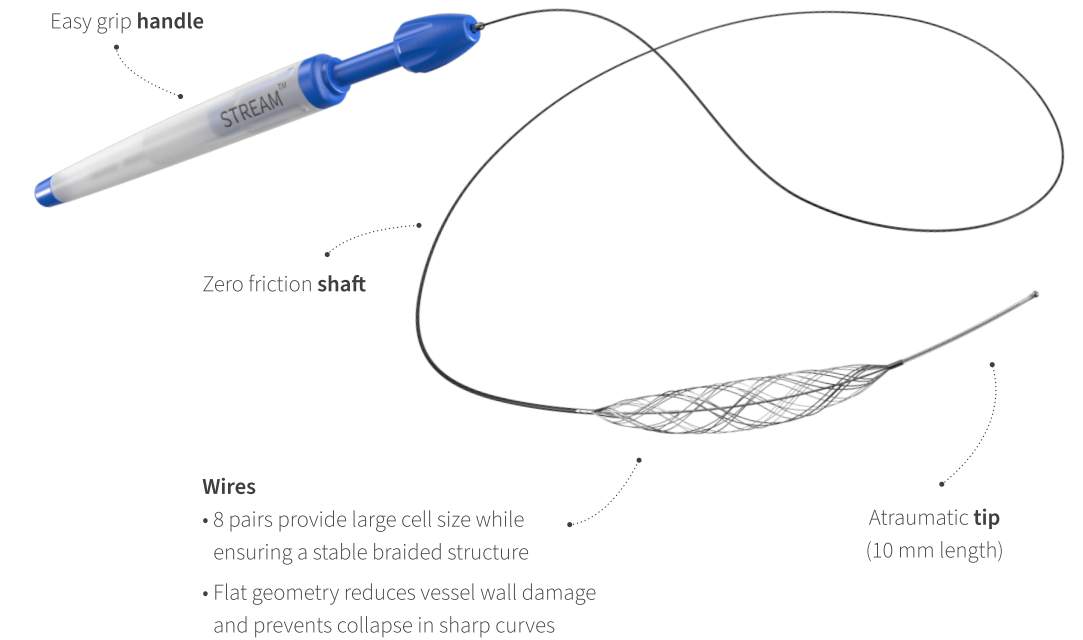
**Cross-Wire Entanglement** within overlapping braided wires ensnares the clot.

## Precise Manipulation

The Stream's unique handle uses an intuitive and ergonomic design to translate forces while providing optimized tensile feedback.

- **Free mode** allows continuous adjustments.
- **Auto-lock mode** allows incremental adjustments.

The Stream devices are intended for use in vessel diameters of 1.5 – 6.0 mm



## A perfect fit, every time

Device	Catalog number	Maximal braid length	Actuation shaft length	Effective braid diameter	Recommended vessel diameter	Microcatheter Min ID
Stream 17	FG0010	25 mm	191 cm	0.4-3.5 mm	1.5- 3.5 mm	0.017"
Stream	FG0002	31 mm	193 cm	0.5-4.5 mm	1.5-4.5 mm	0.021"
Stream XL	FG0001	36 mm		0.5-6.0 mm	4.0-6.0 mm	